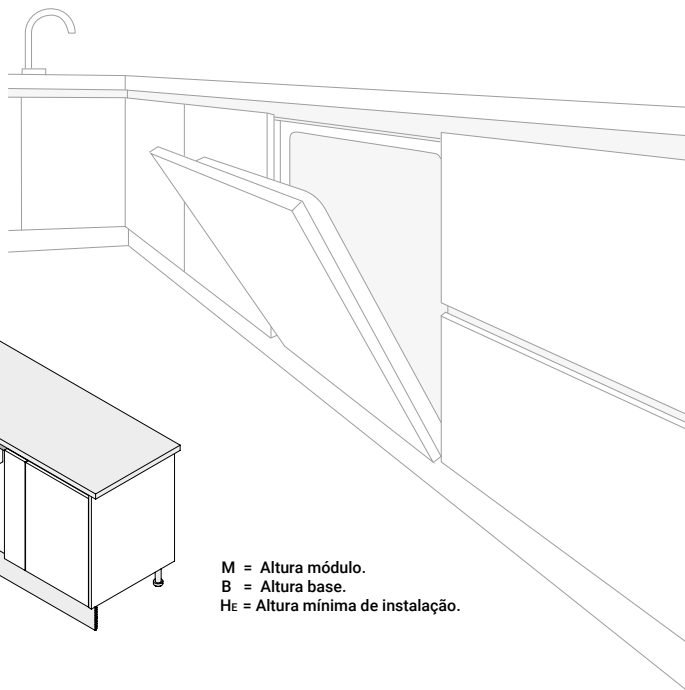
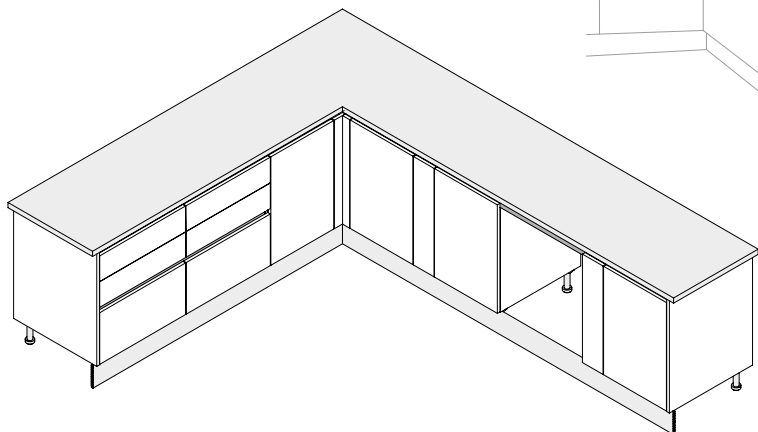


PERFIL SUPERIOR GOLA

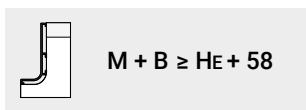
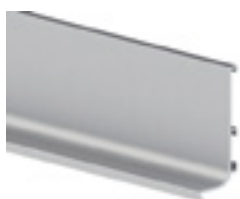
Compatibilidade do sistema Gola com electrodomésticos de encastre.



M = Altura módulo.
B = Altura base.
HE = Altura mínima de instalação.

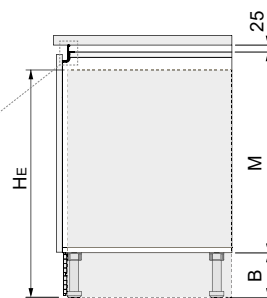
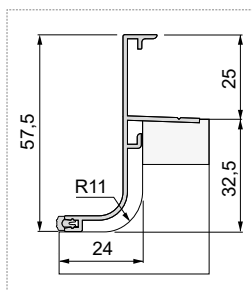
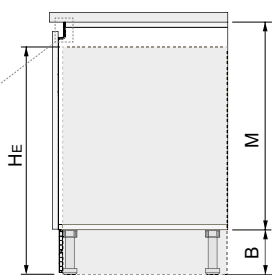
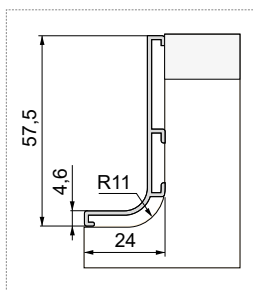
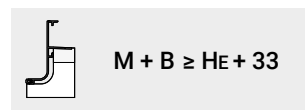
Perfil superior

OPÇÃO 1



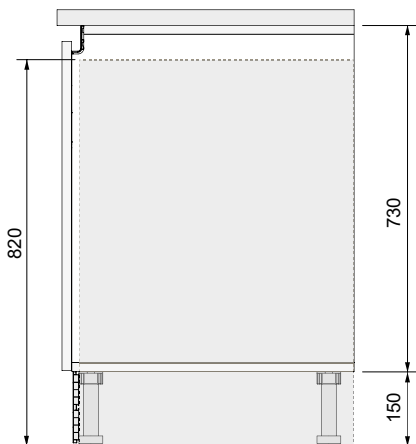
Perfil superior com batente.

OPTION 2



EXAMPLE 1

HE = 820 mm *
M + B ≥ 820 + 58
M + B ≥ 878
M = 730 mm
B = 150 mm



EXAMPLE 2

HE = 820 mm *
M + B ≥ 820 + 33
M + B ≥ 853
M = 700 mm
B = 155 mm

