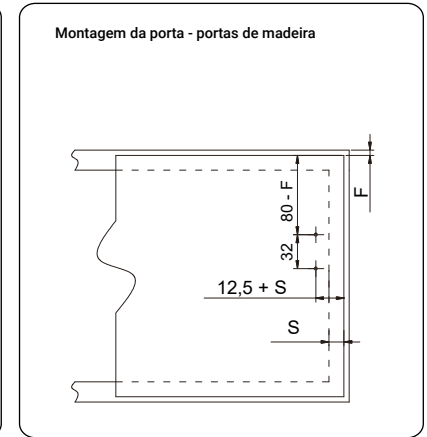
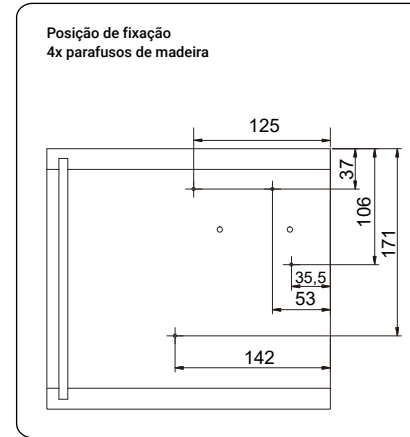
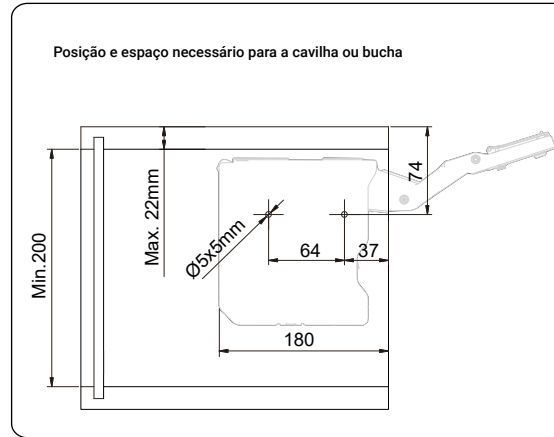
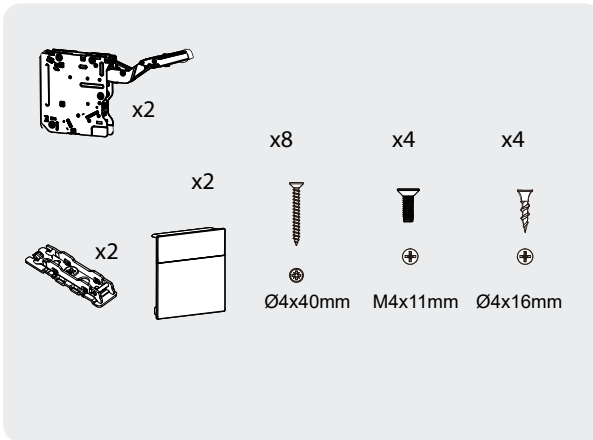


S: Sobreposição da ilharga  
F: Espaço



CÁLCULO DA FORÇA DO COMPASSO

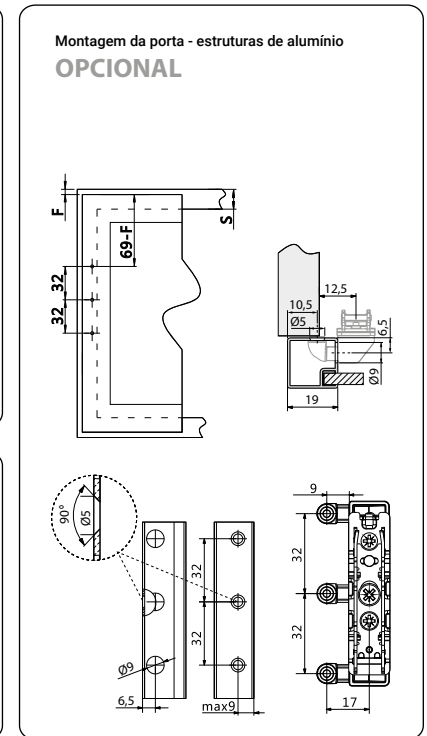
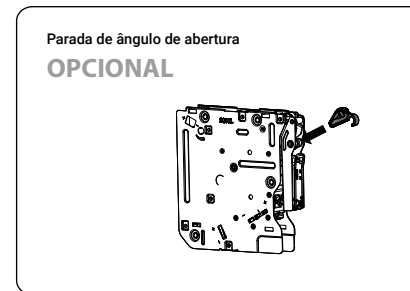
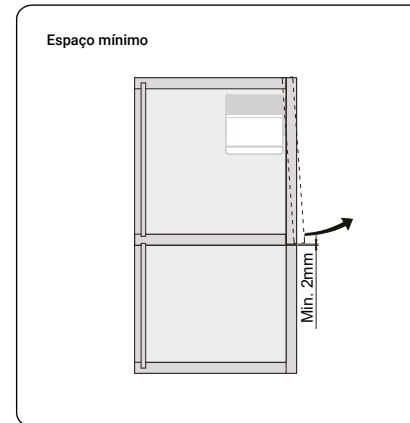
$FH = H \times (\text{Peso puerta} + 2 \times \text{peso puxador})$

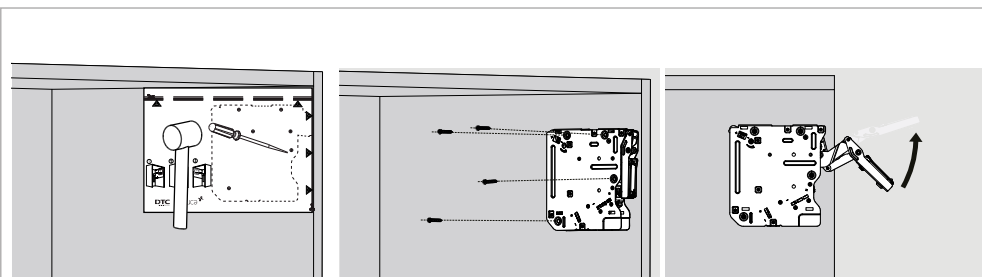
	FH
LOW	580-1250
MEDIUM	960-2040
HIGH	1800-3500

Rebordo/folga da peça

e (mm)	16	19	22	26	28
X (mm)	70	58	49	35	26

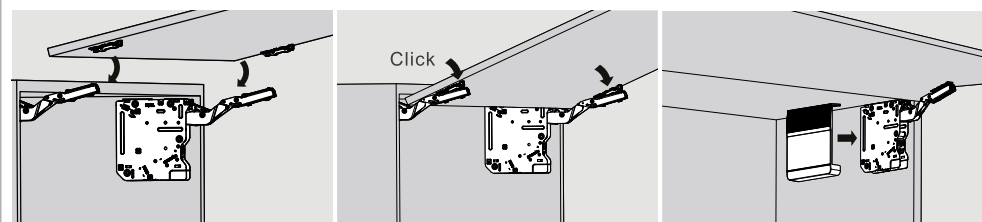
$Y = H \times 0,29 - 15 + e$





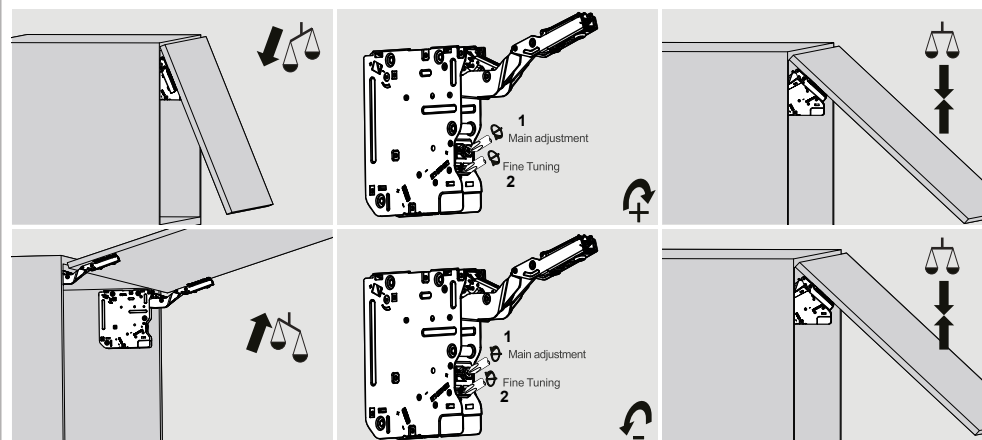
Bitola de montagem

Atenção ao abrir



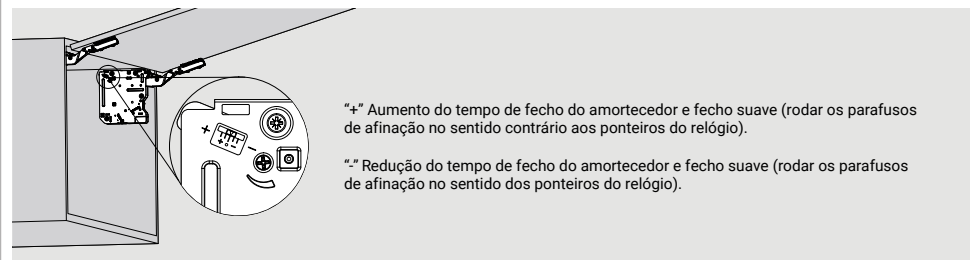
Montagem da porta

## Regulação ou afinação de suspensão

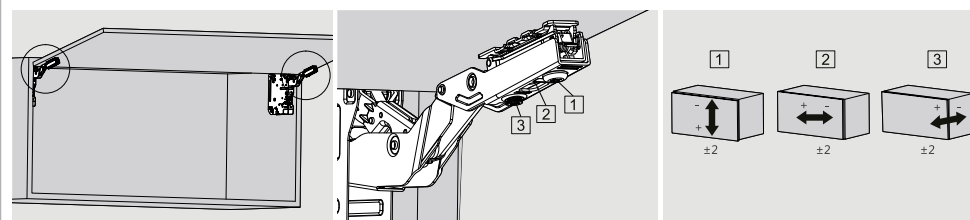


1- Regulação ou afinação principal  
2- Afinação ou regulação

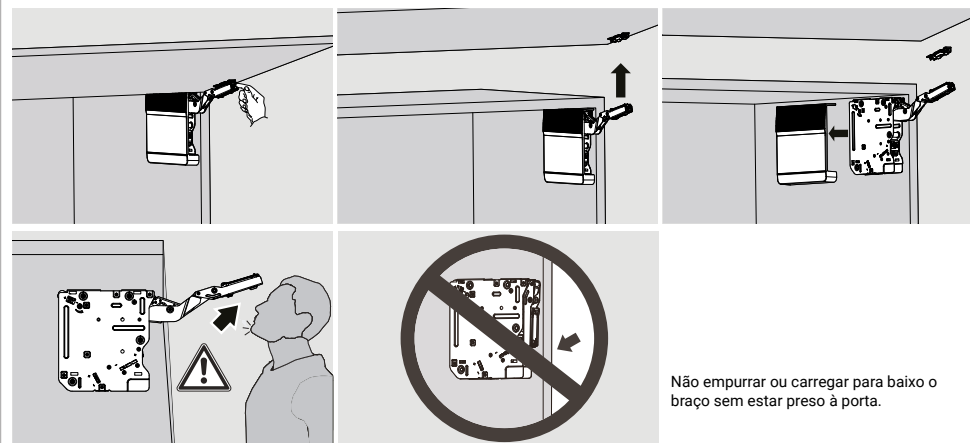
## Regulação ou afinação da velocidade do fecho



## Regulação ou afinação da posição da porta

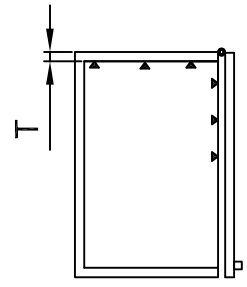
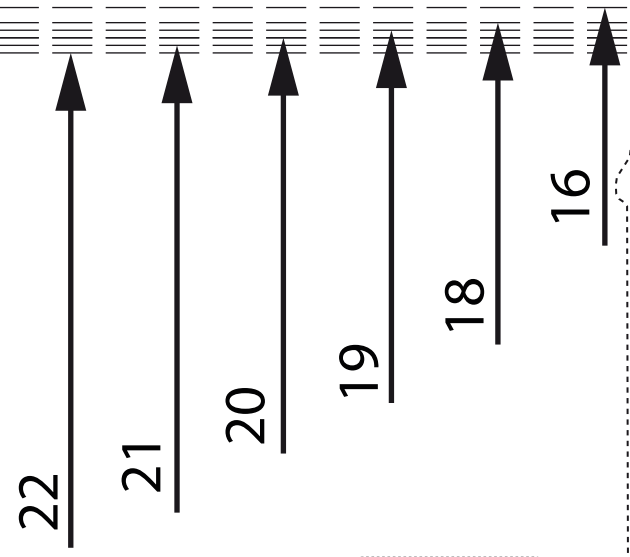
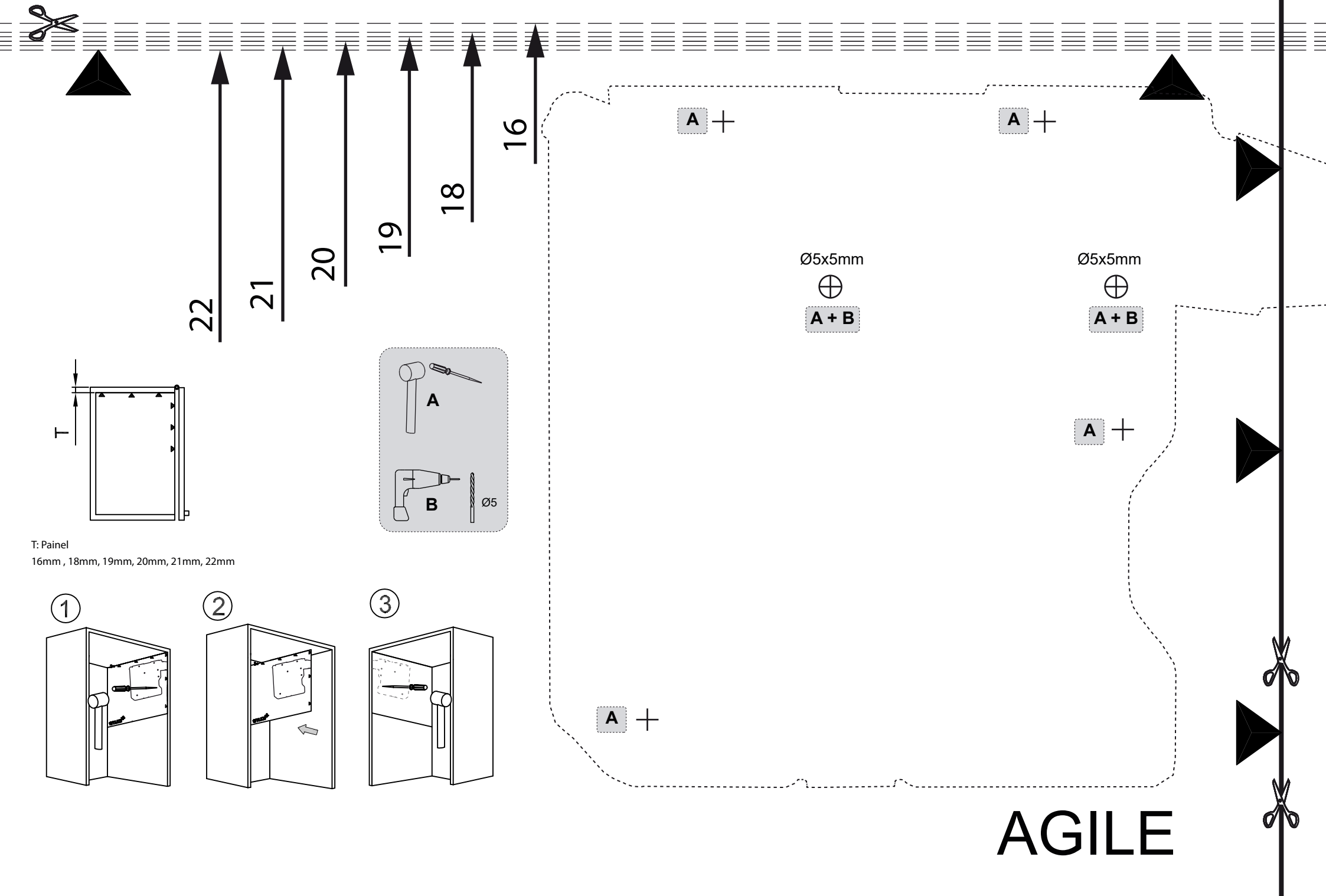


## Remoção

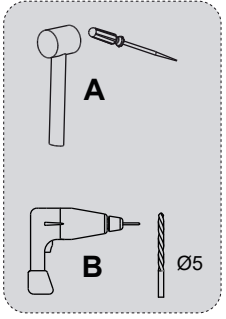


Não carregar nem empurrar para baixo

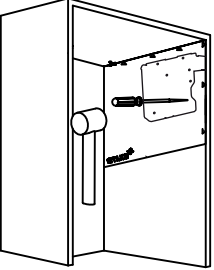
Não empurrar ou carregar para baixo o braço sem estar preso à porta.



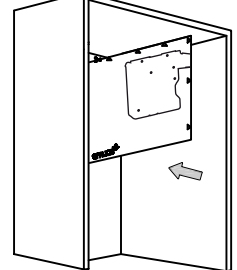
T: Painel  
16mm , 18mm, 19mm, 20mm, 21mm, 22mm



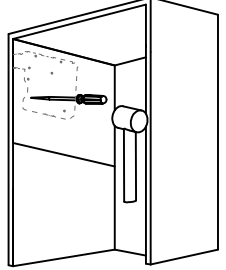
1



2

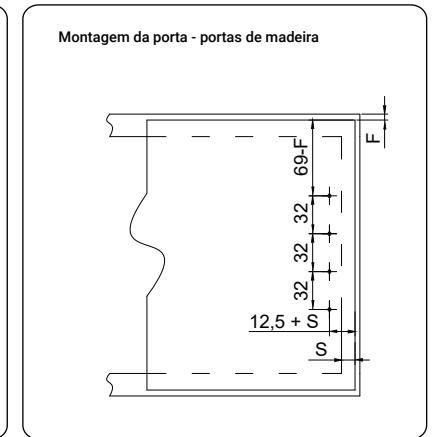
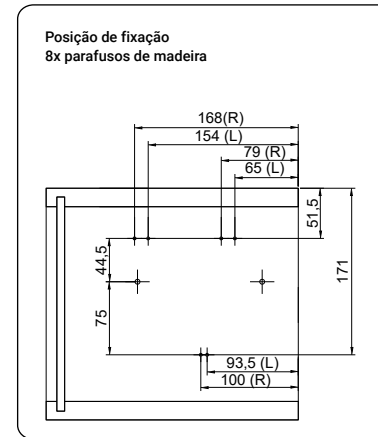
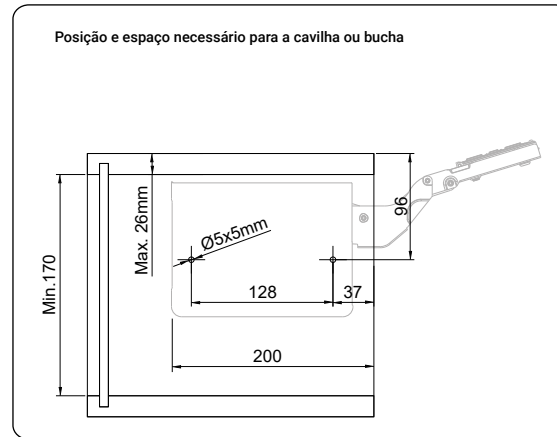
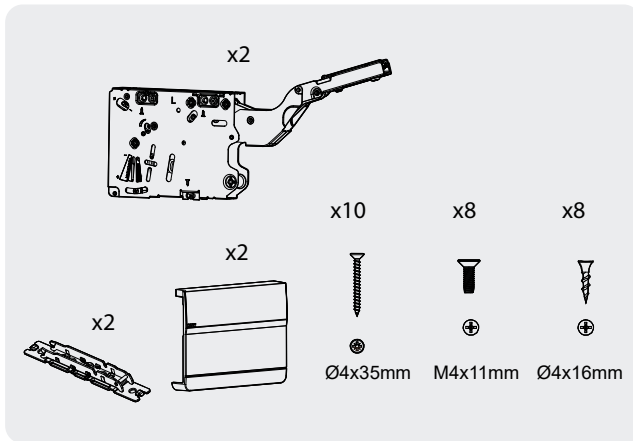


3



# AGILE

S: Sobreposição da ilharga  
F: Espaço



**CÁLCULO DA FORÇA DO COMPASSO**

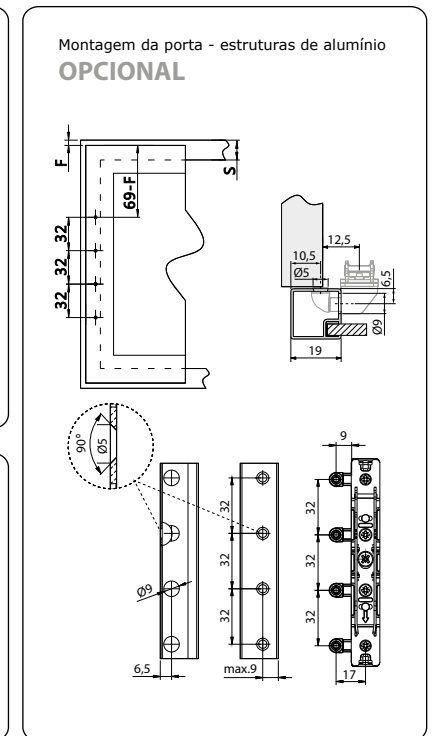
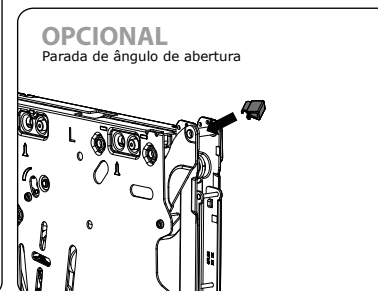
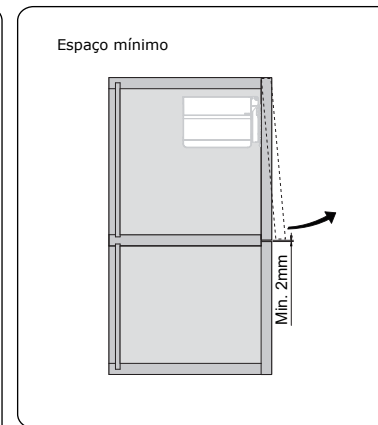
$FH = H \times (\text{Peso puerta} + 2^{\circ} \text{ peso puxador})$

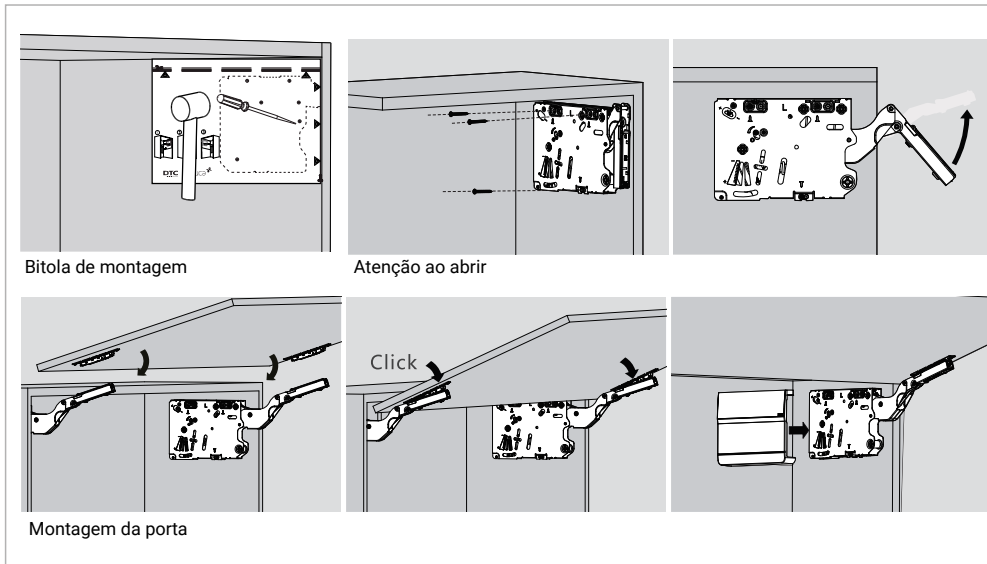
	<b>FH</b>
Extra High	3.200-9.000

Rebordo/folga da peça

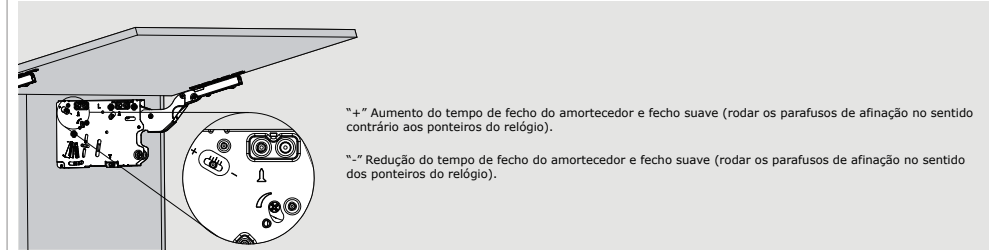
e (mm)	16	19	22	26	28
X (mm)	70	58	49	35	26

$Y = H \times 0,29 - 15 + e$

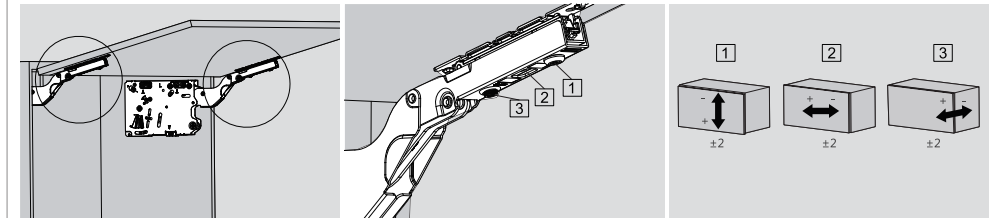




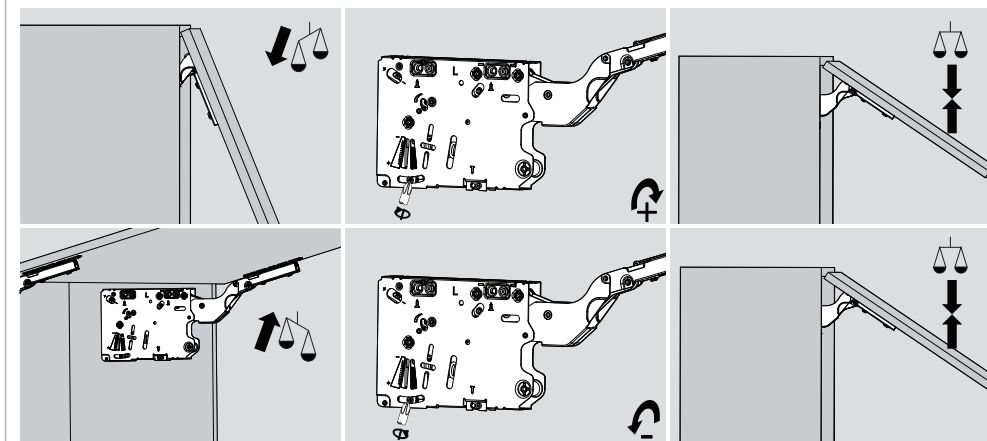
## Regulação ou afinação da velocidade do fecho



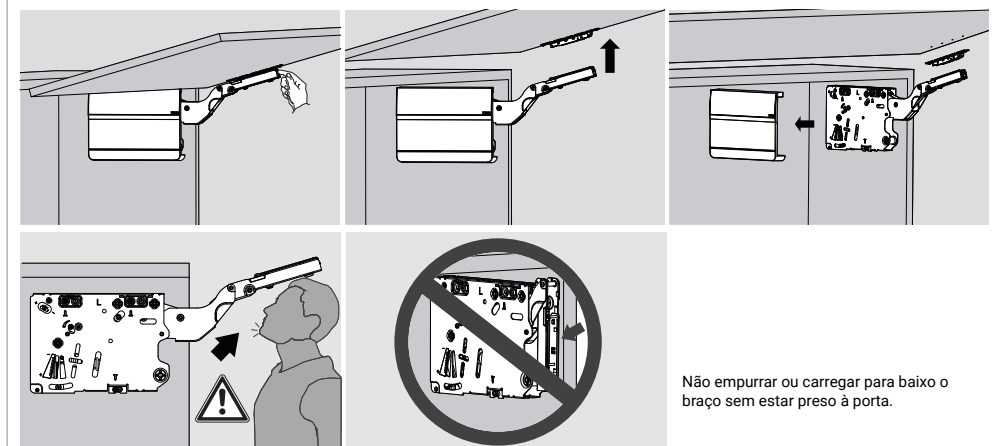
## Regulação ou afinação da posição da porta

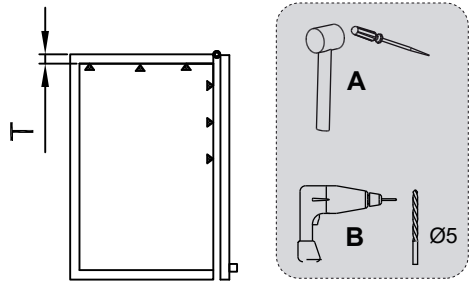
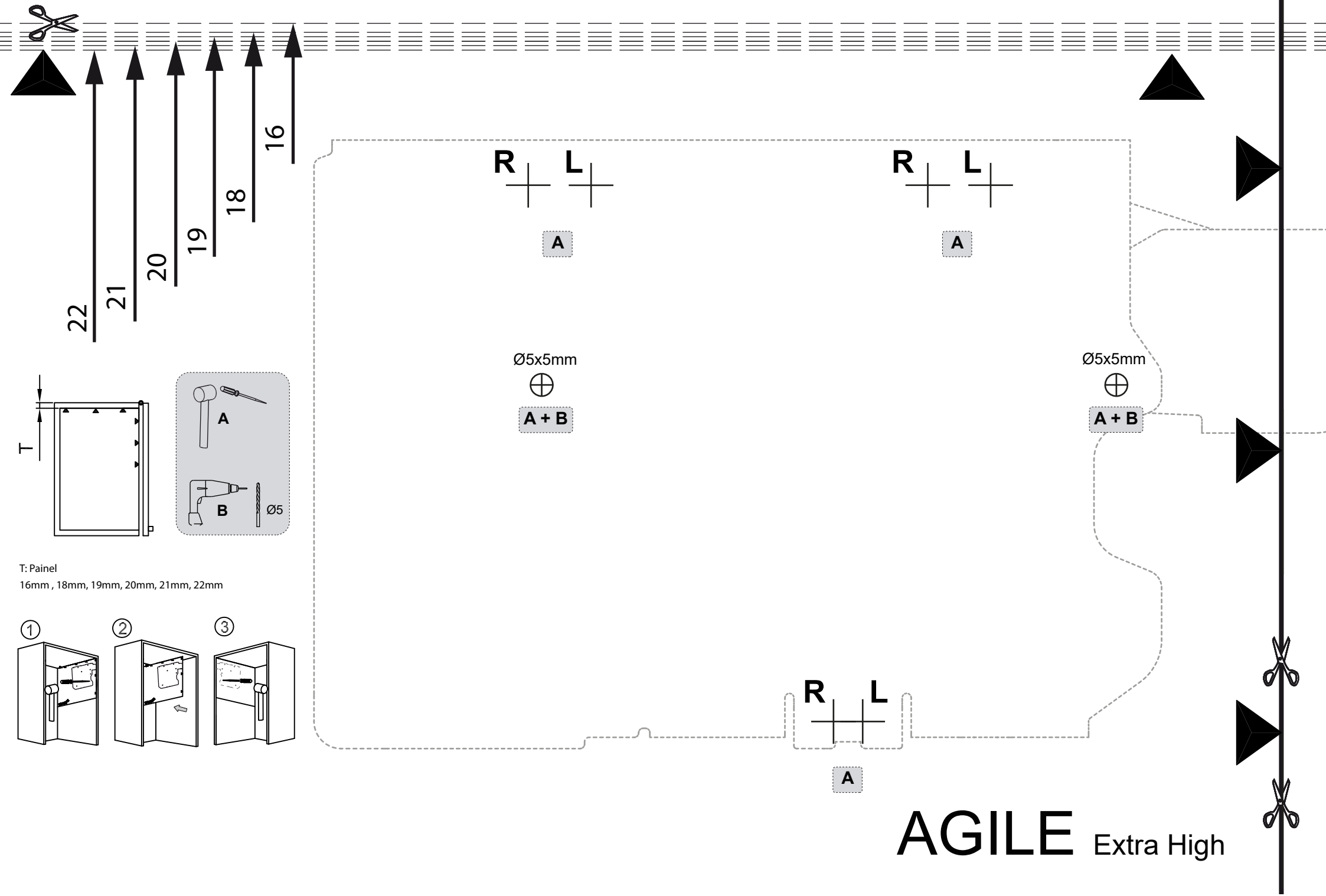


## Regulação ou afinação de suspensão

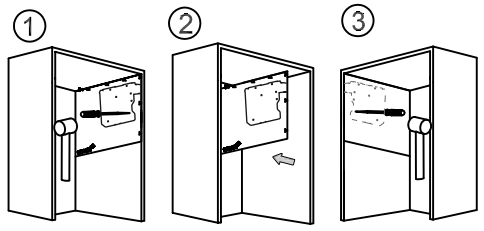


## Remoção





T: Painei  
16mm , 18mm, 19mm, 20mm, 21mm, 22mm



# AGILE Extra High